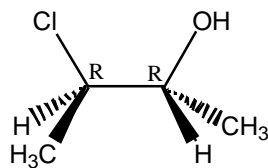
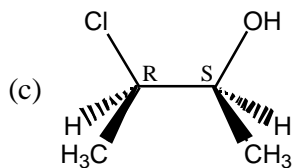
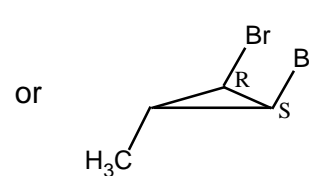
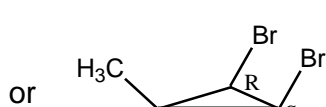
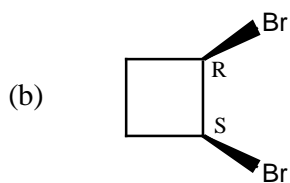
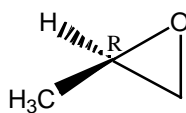
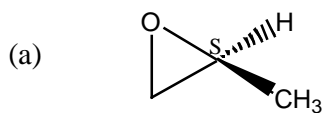
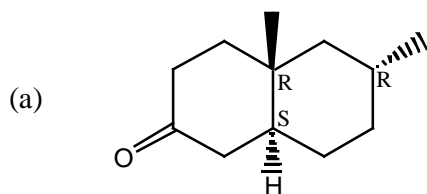


Answers to Problem Set #4
CH241-2001F

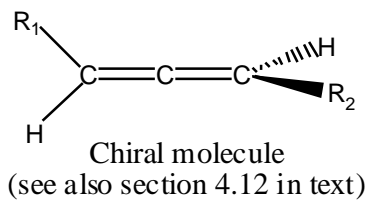
- [1] Some answers are provided below. Please be sure to determine the degree of unsaturation first.

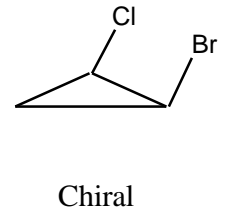
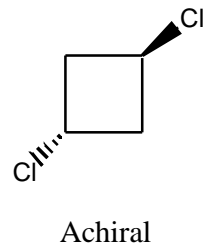
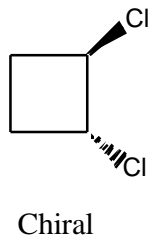
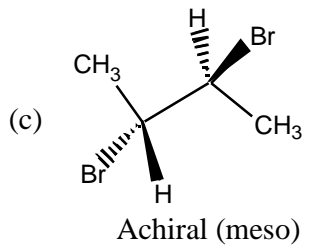


- [2]



- (b) The allenic portion of the molecule confers chirality on mycomycin.





- [3] (a) **A** and **D**.
 (b) **A** and **C** or **B** and **C** or **D** and **C**.
 (c) **A** and **B**.
 (d) **C**.
 (e) **A** and **B**.