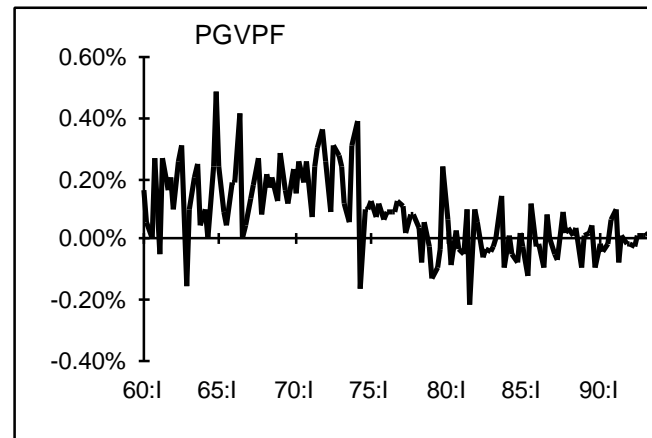
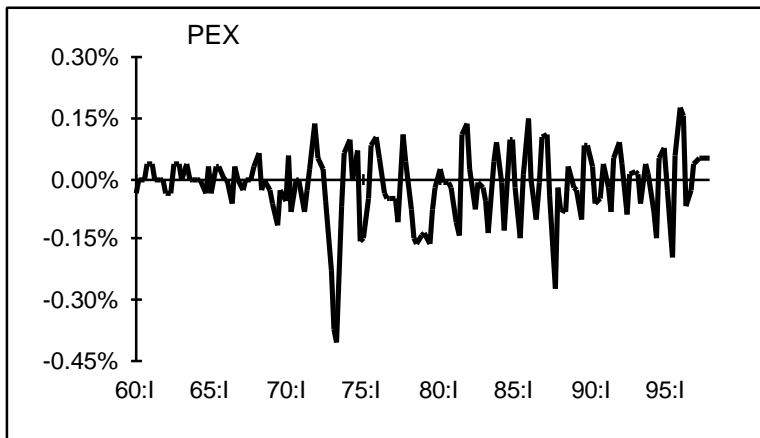
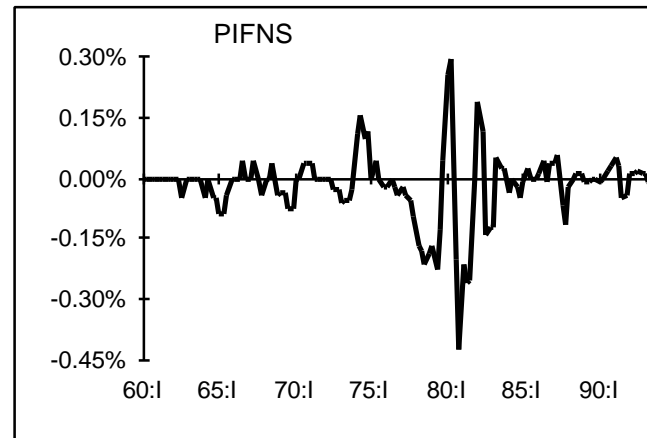
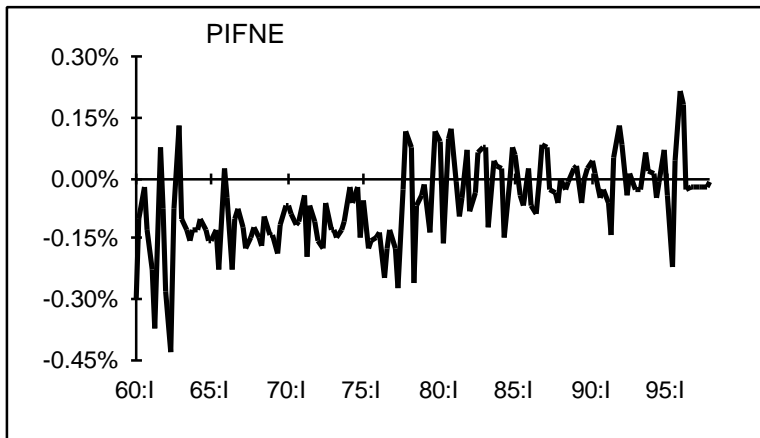
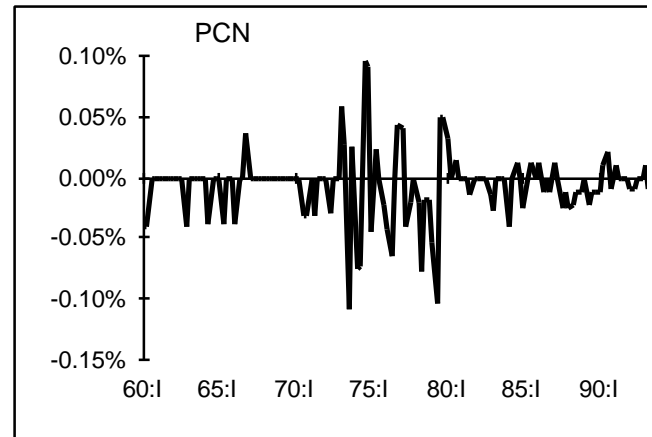
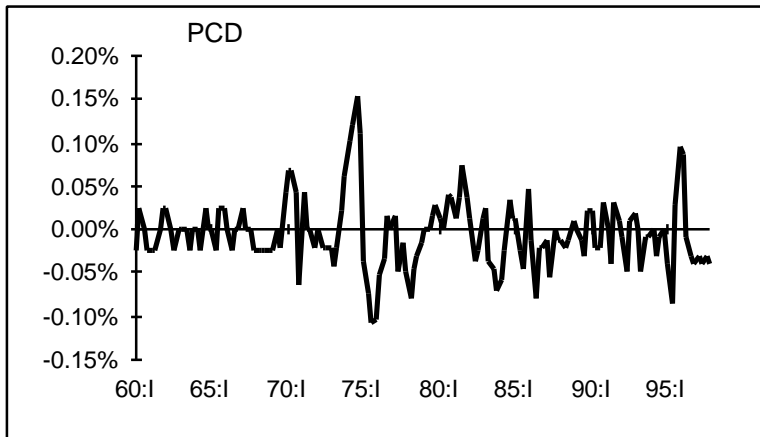
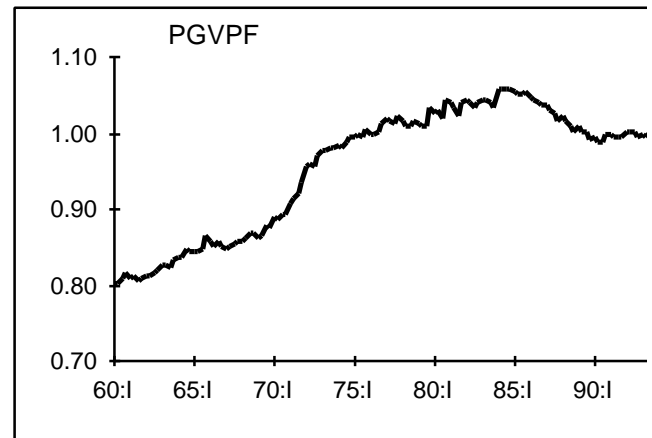
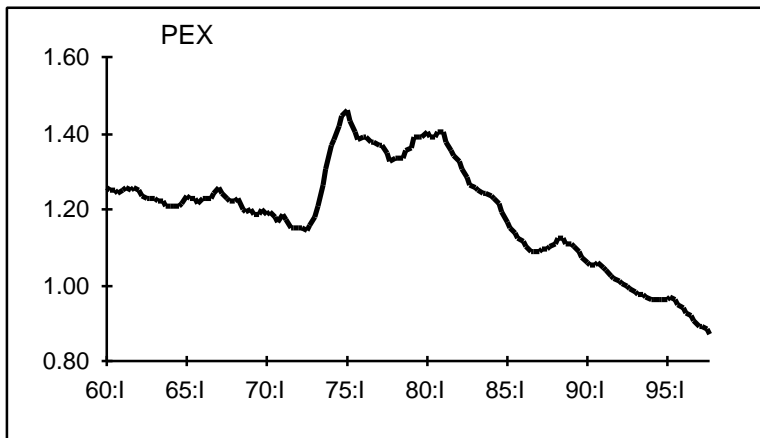
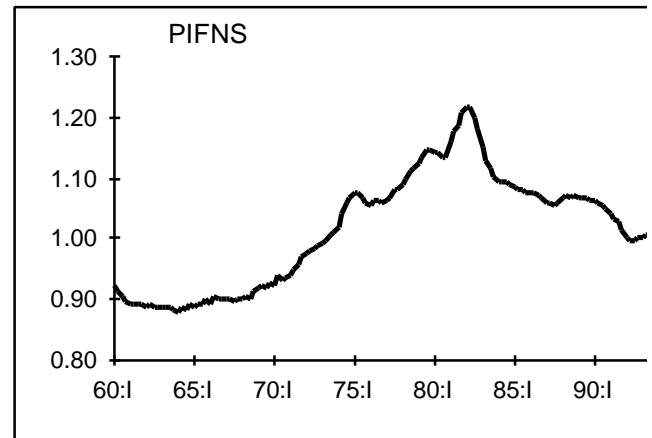
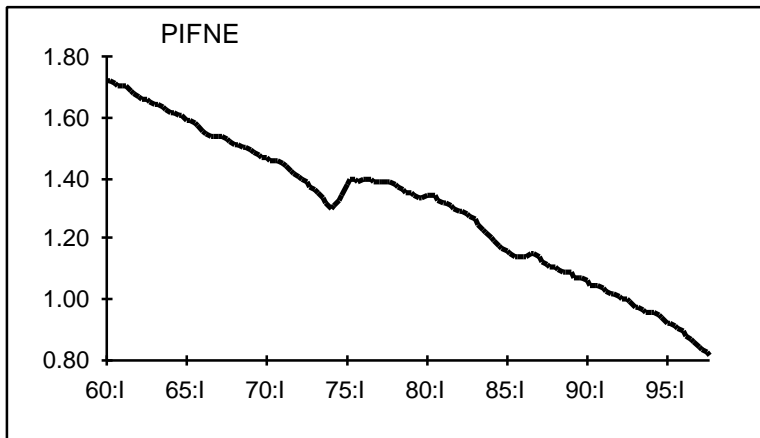
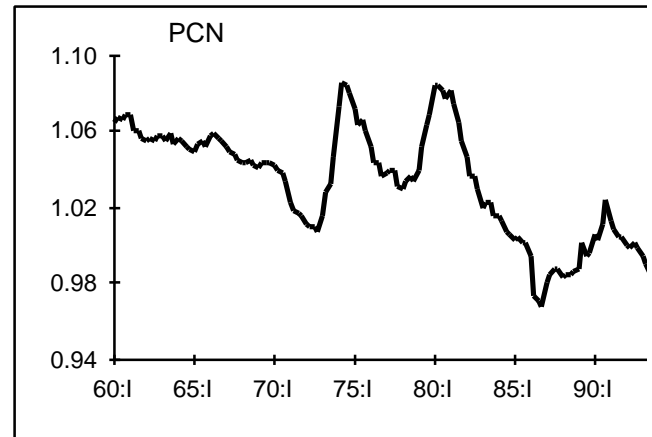
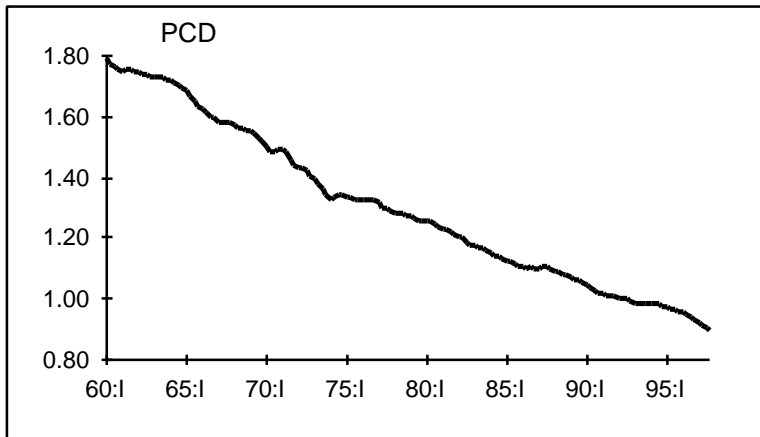


Figure 2. Difference between implicit deflators and chain-weighted indexes



- Notes: 1. Differences are calculated as deflator minus chain-weighted divided by chain-weighted.
 2. PCD - consumer durable goods; PCN - consumer nondurable goods; PCS - consumer services; PIFNE - fix structures; PIFR - residential investment; PEX - exports of goods and services; PGVFP - federal governmenter

Figure 3. Relative implicit price deflators



- Notes: 1. Relative deflators are the ratio of the sector deflator to the GDP deflator.
 2. PCD - consumer durable goods; PCN - consumer nondurable goods; PCS - consumer services; PIFNE - fix structures; PIFR - residential investment; PEX - exports of goods and services; PGVVPF - federal government