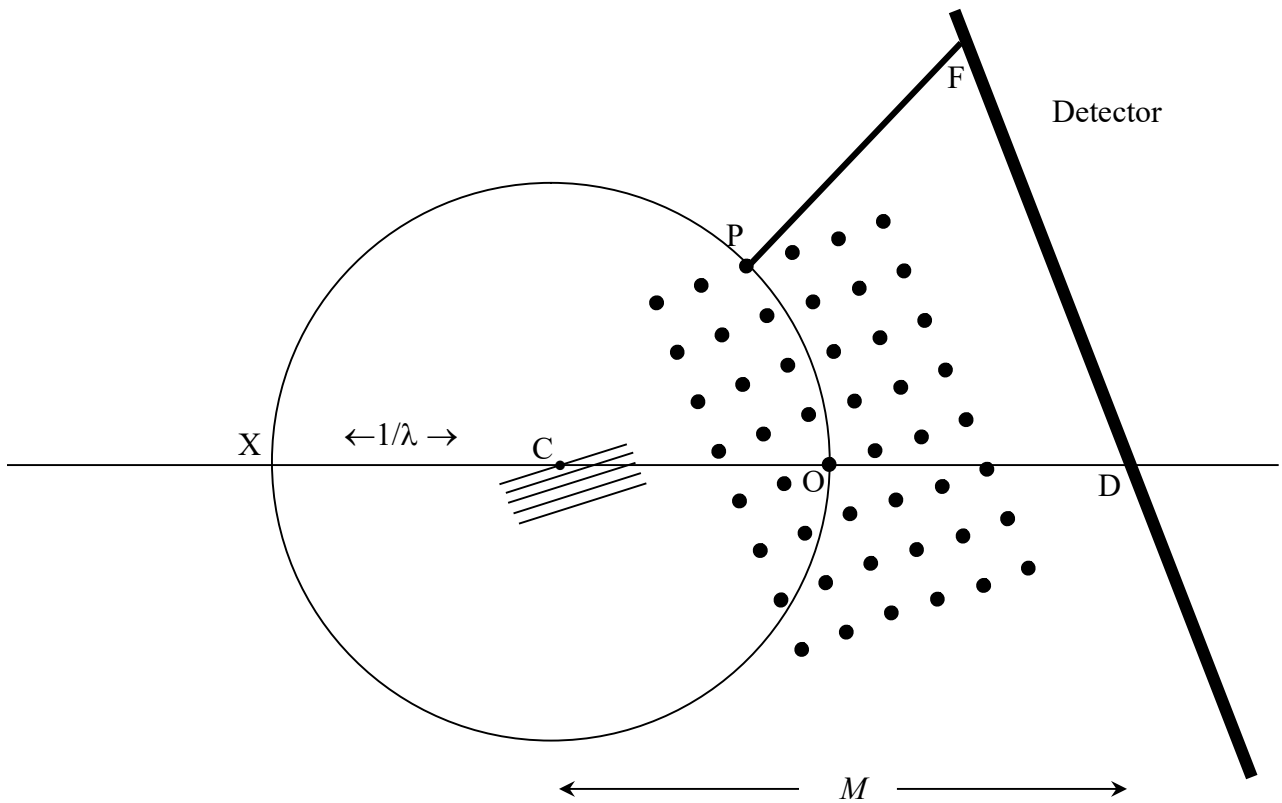


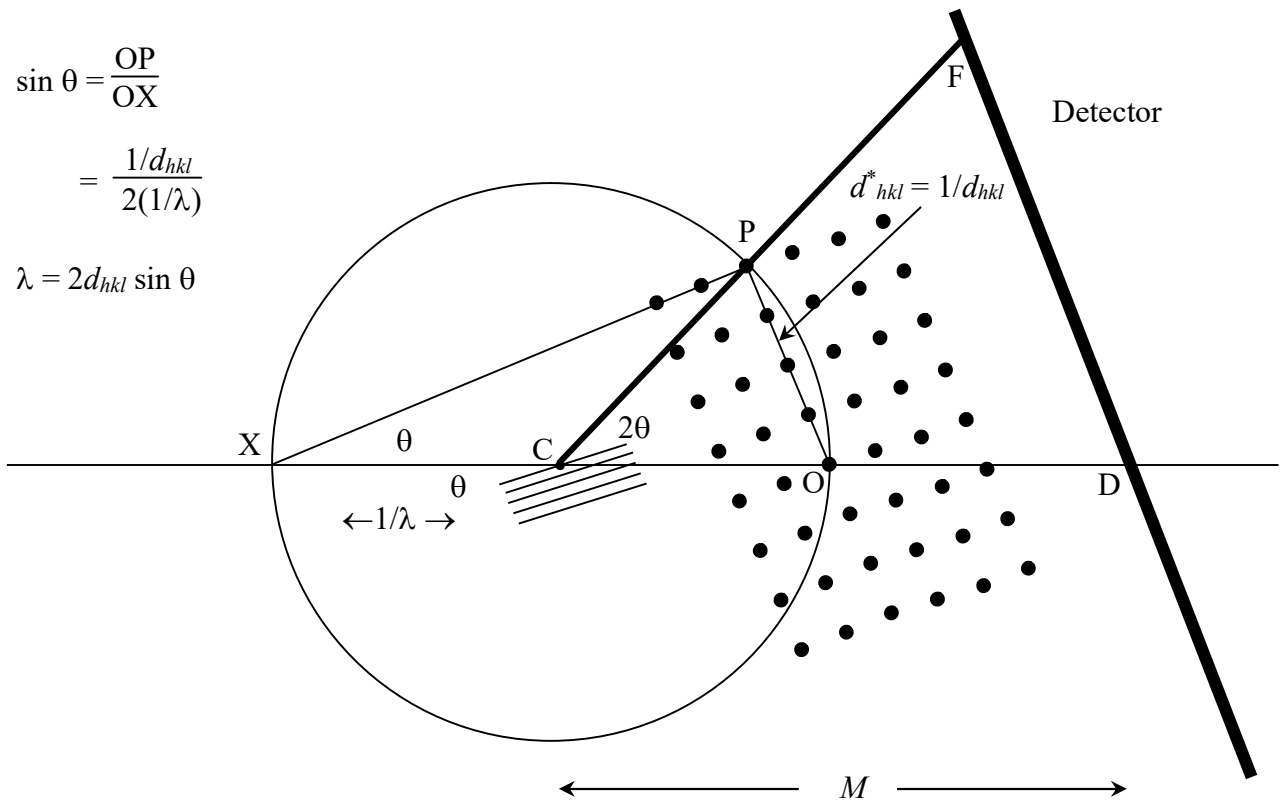
# Ewald Sphere



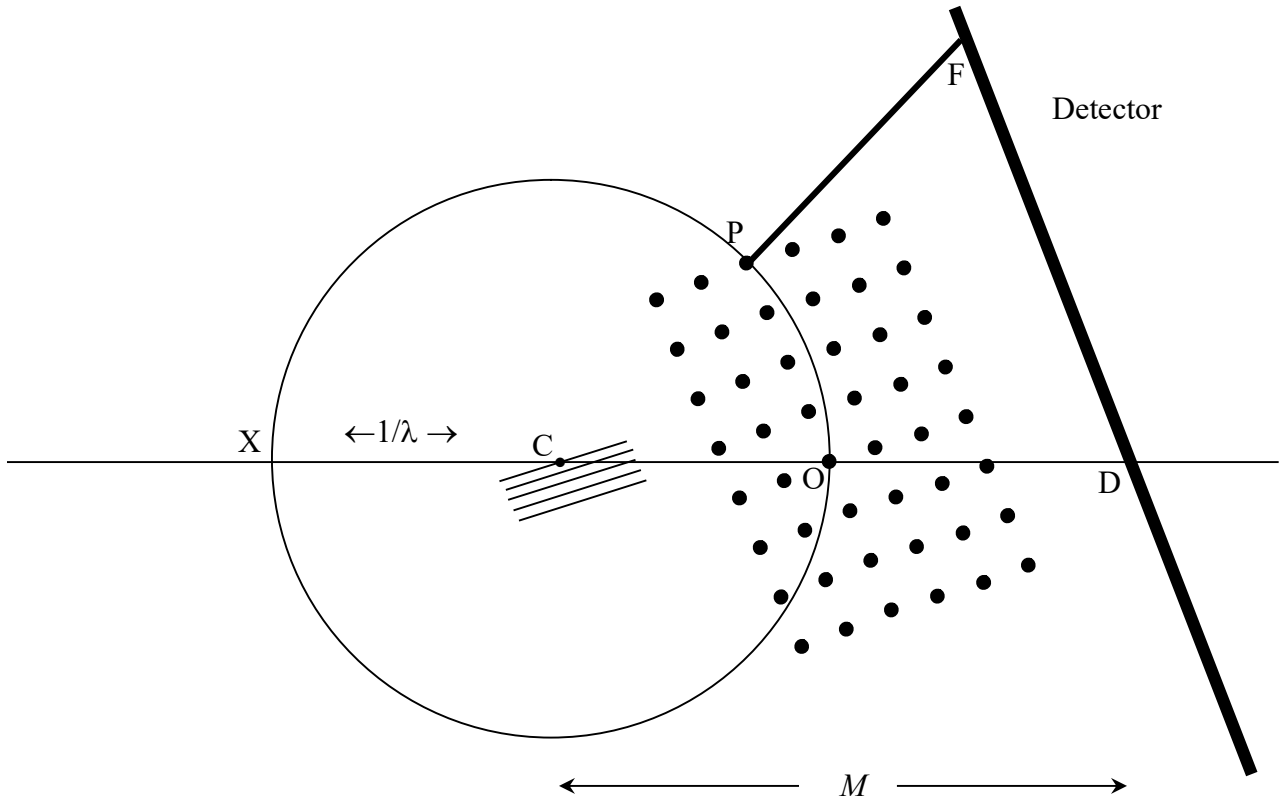
$$\sin \theta = \frac{OP}{OX}$$

$$= \frac{1/d_{hkl}}{2(1/\lambda)}$$

$$\lambda = 2d_{hkl} \sin \theta$$



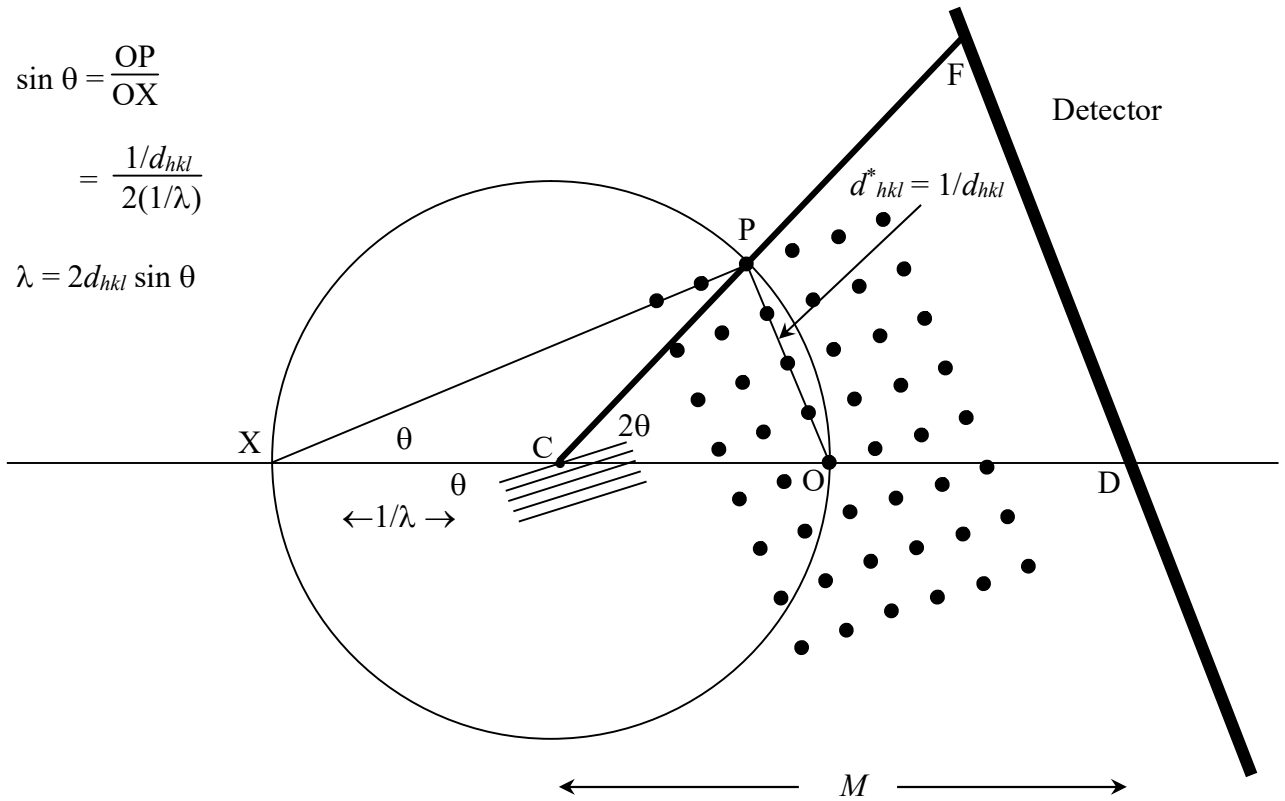
# Ewald Sphere



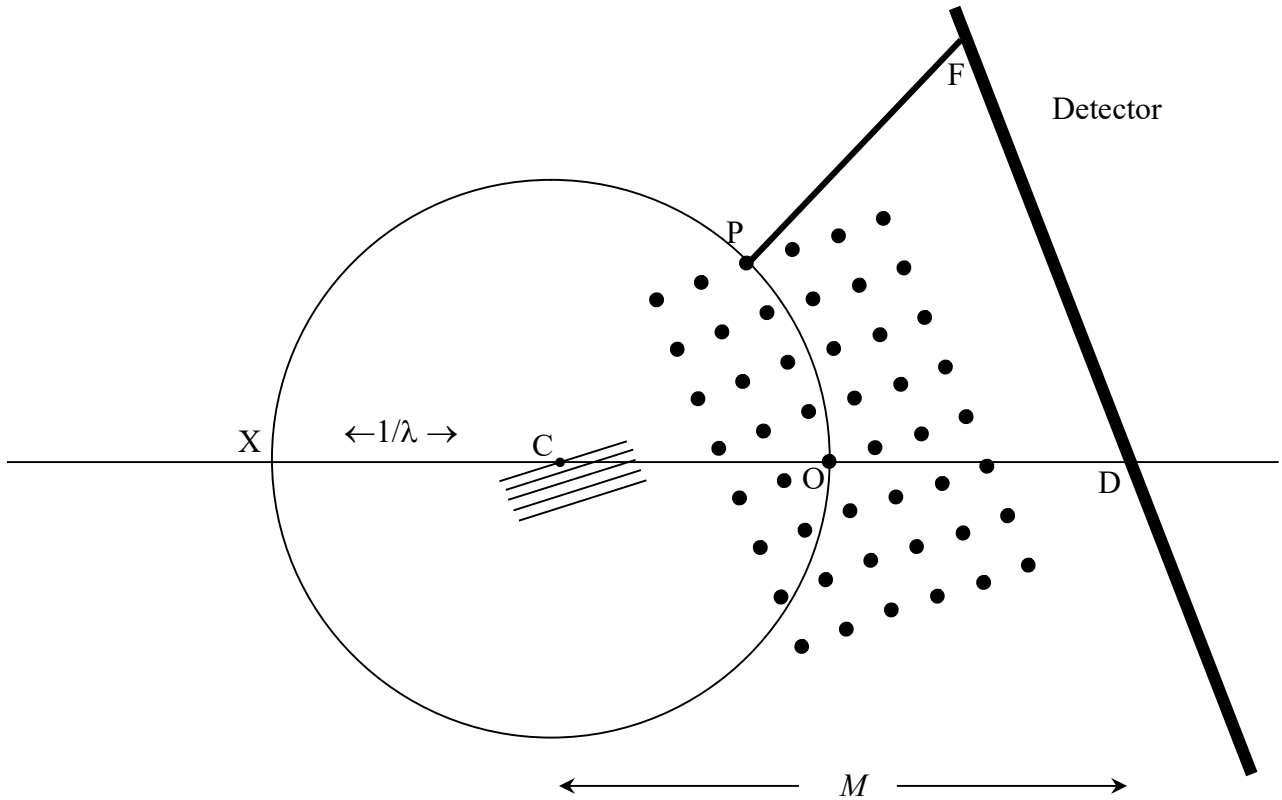
$$\sin \theta = \frac{OP}{OX}$$

$$= \frac{1/d_{hkl}}{2(1/\lambda)}$$

$$\lambda = 2d_{hkl} \sin \theta$$



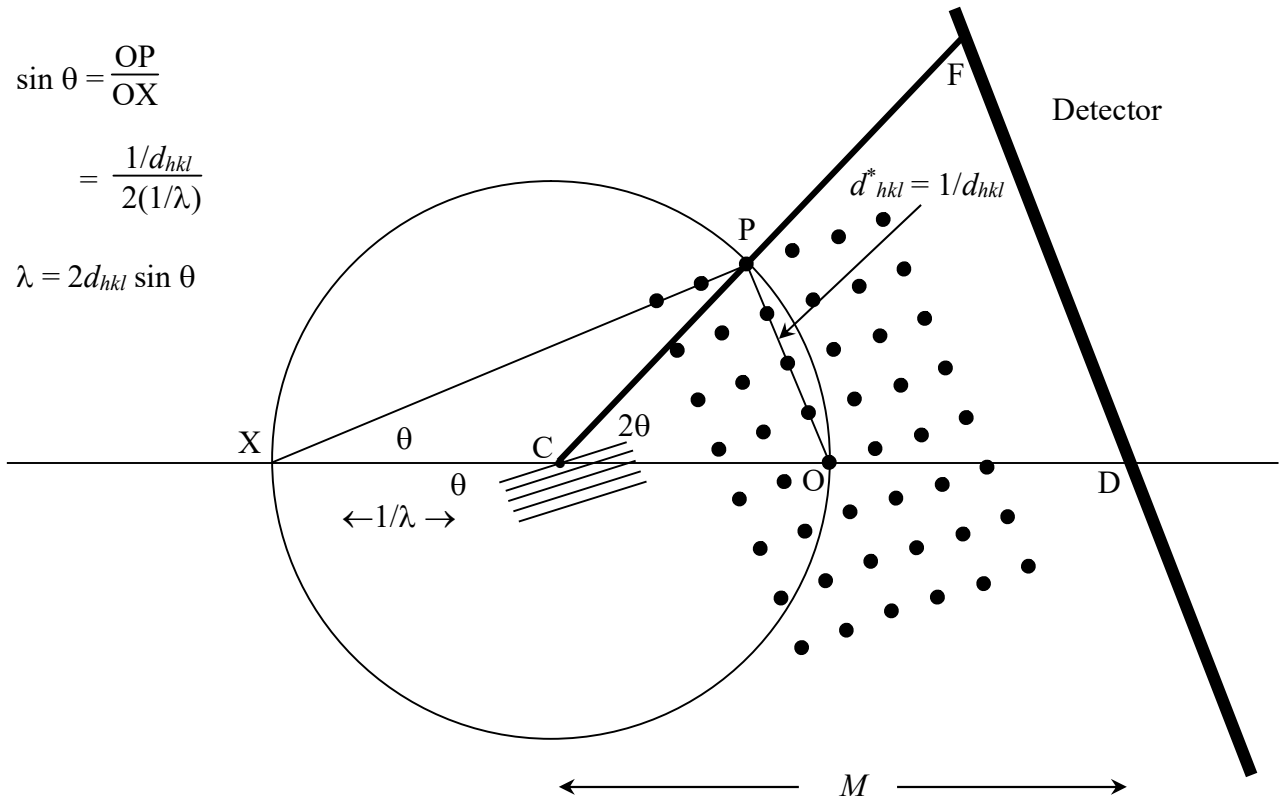
# Ewald Sphere



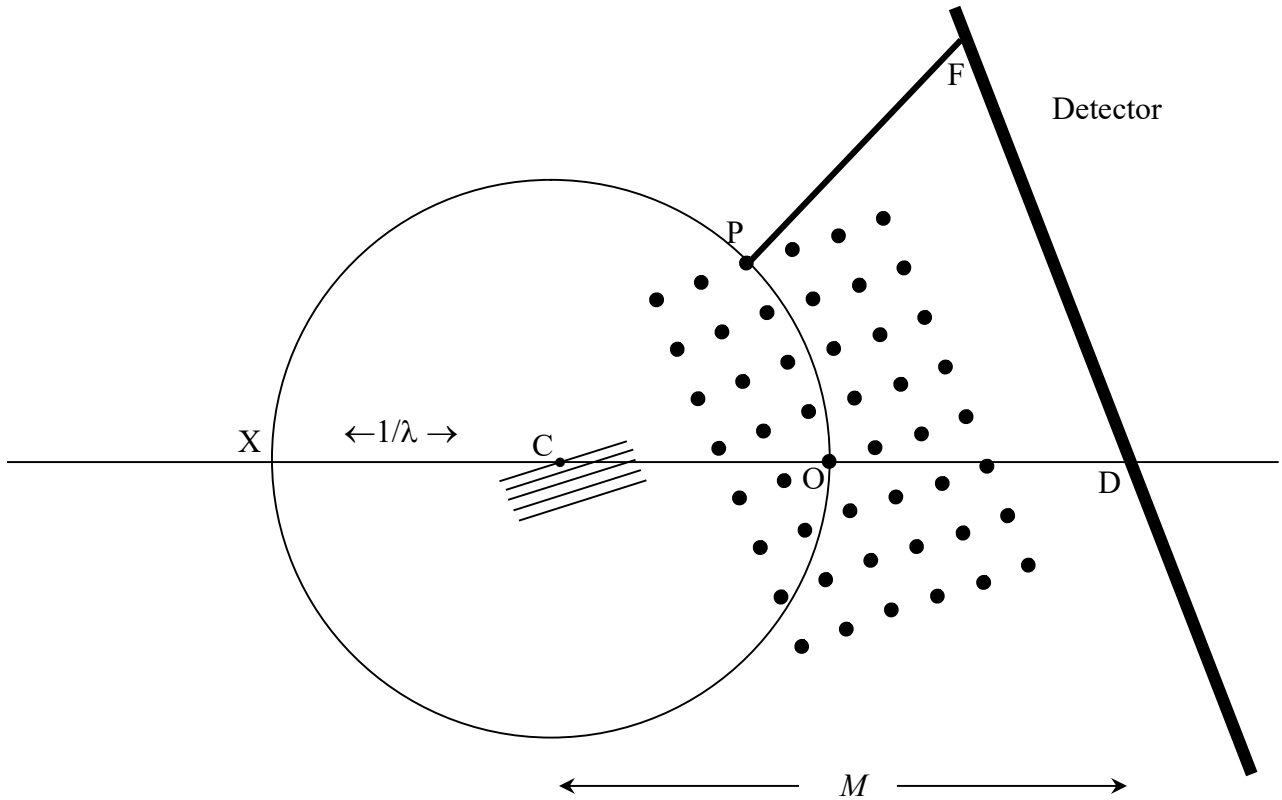
$$\sin \theta = \frac{OP}{OX}$$

$$= \frac{1/d_{hkl}}{2(1/\lambda)}$$

$$\lambda = 2d_{hkl} \sin \theta$$



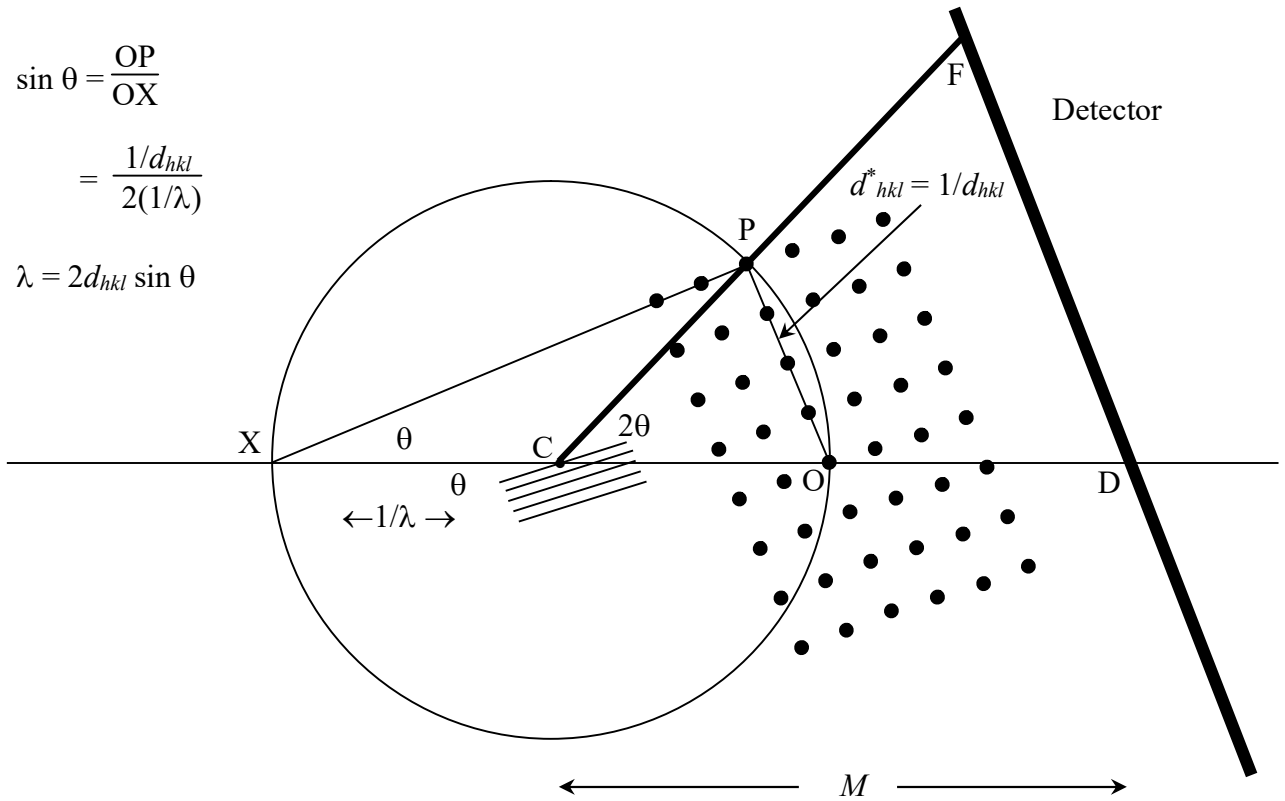
# Ewald Sphere



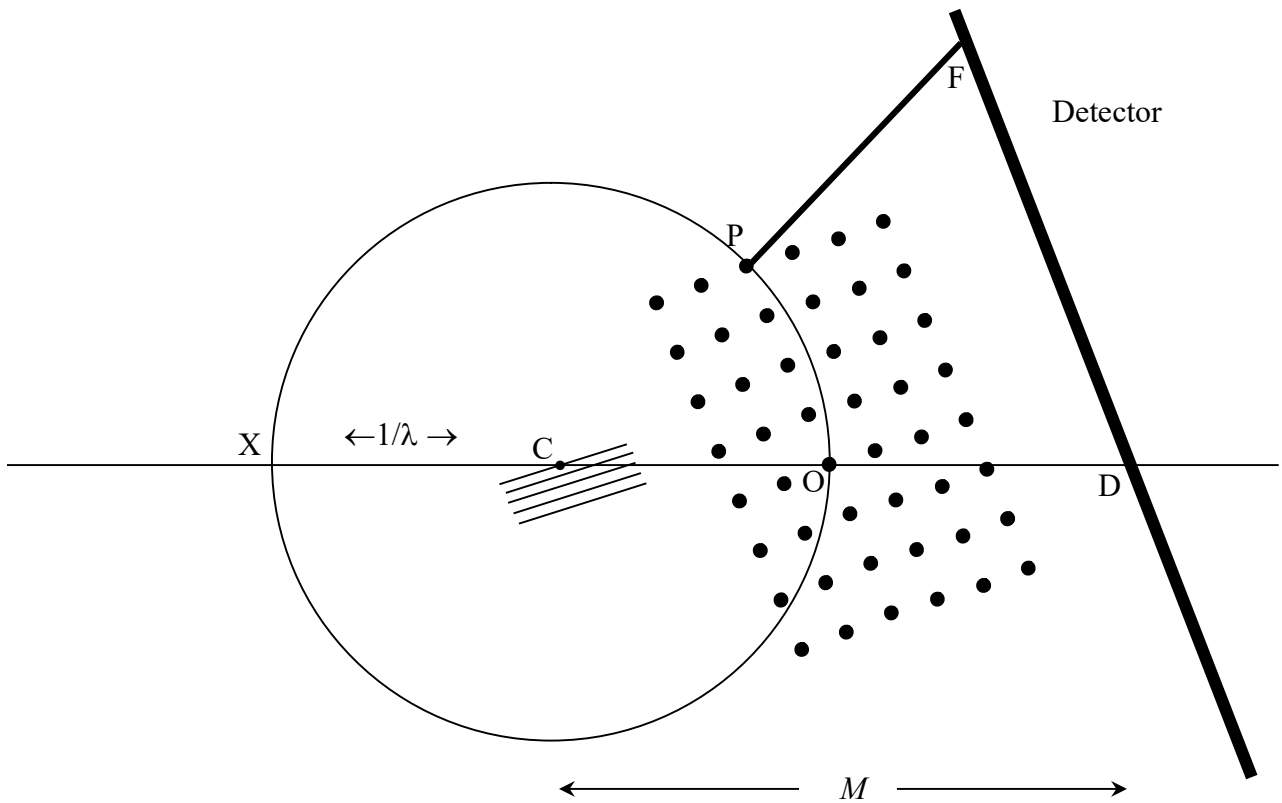
$$\sin \theta = \frac{OP}{OX}$$

$$= \frac{1/d_{hkl}}{2(1/\lambda)}$$

$$\lambda = 2d_{hkl} \sin \theta$$



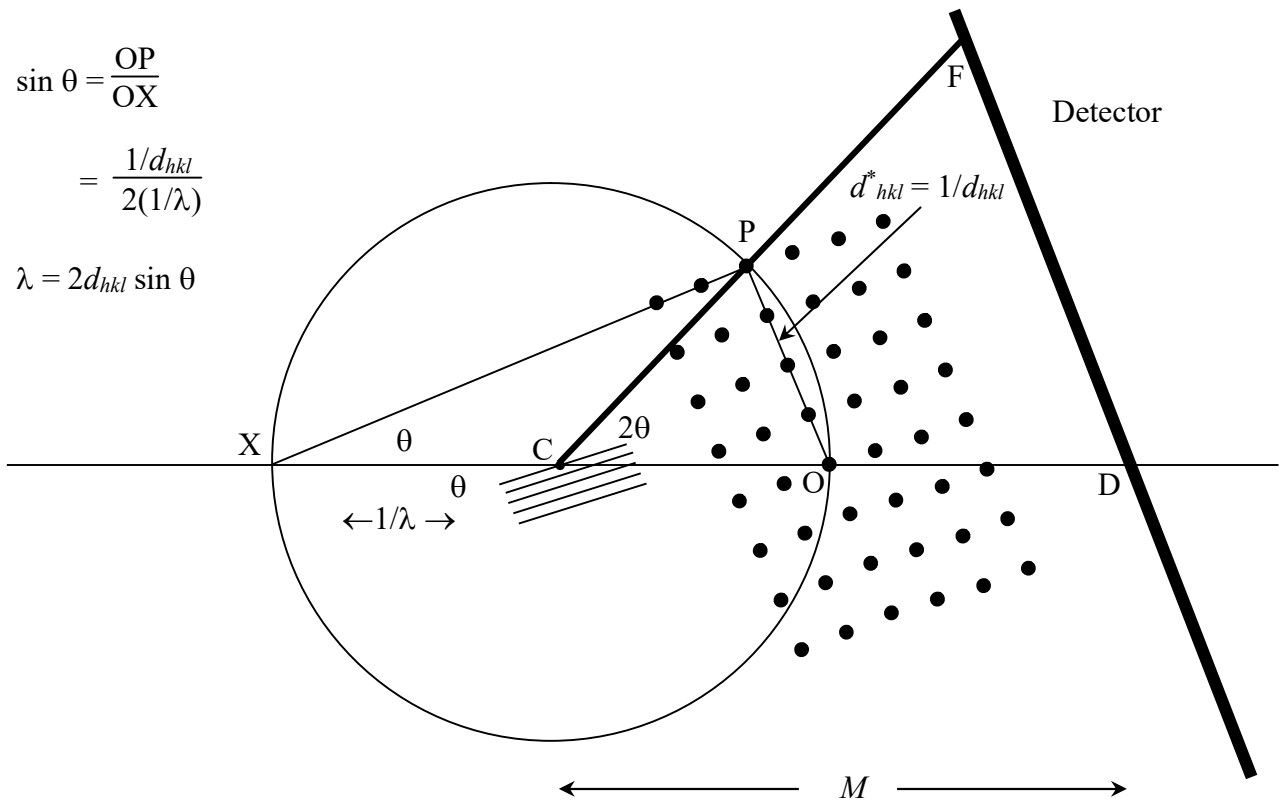
# Ewald Sphere



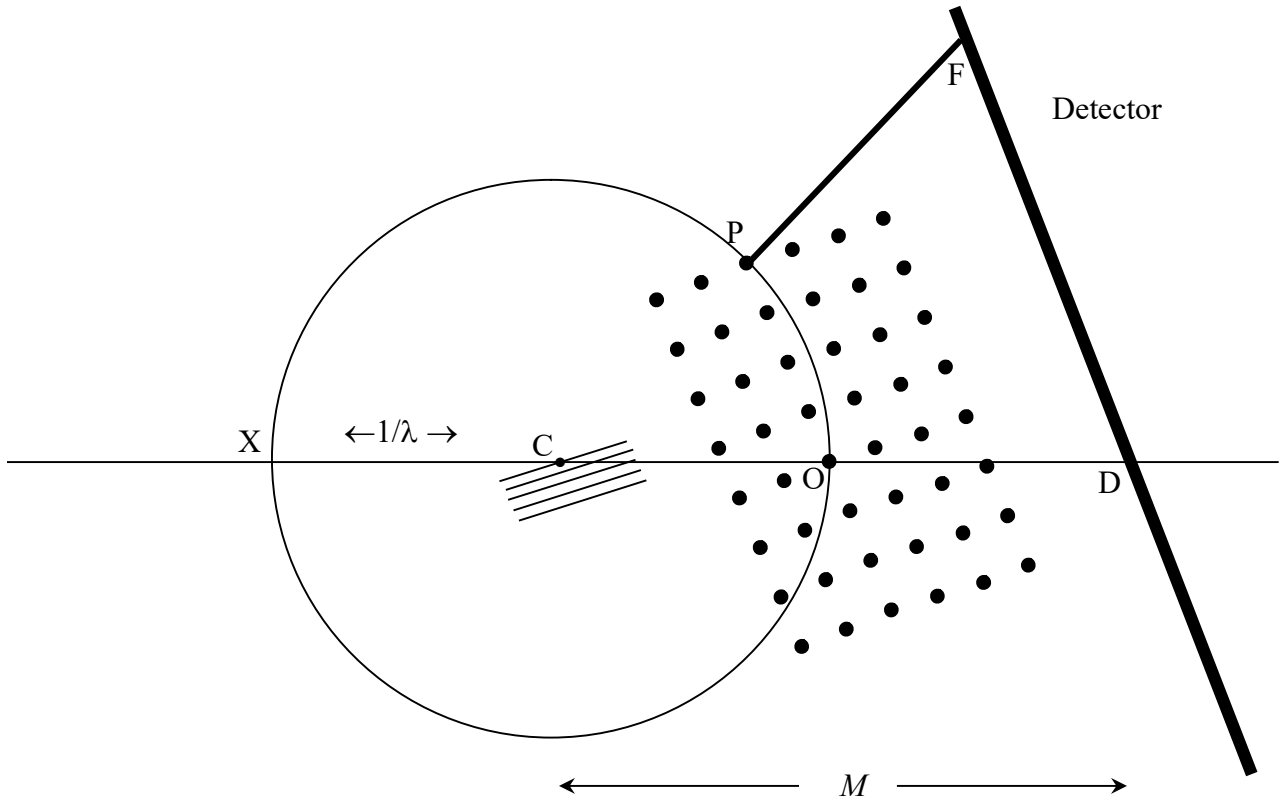
$$\sin \theta = \frac{OP}{OX}$$

$$= \frac{1/d_{hkl}}{2(1/\lambda)}$$

$$\lambda = 2d_{hkl} \sin \theta$$



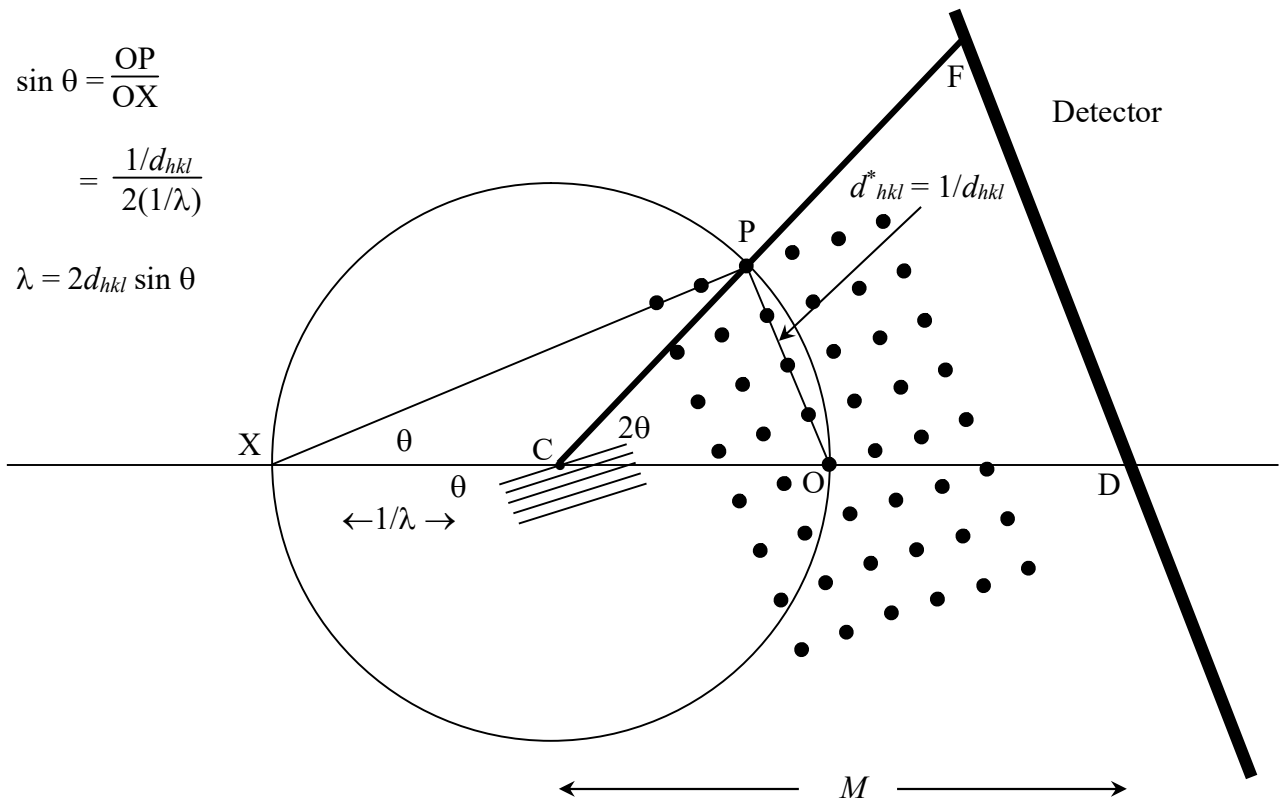
# Ewald Sphere



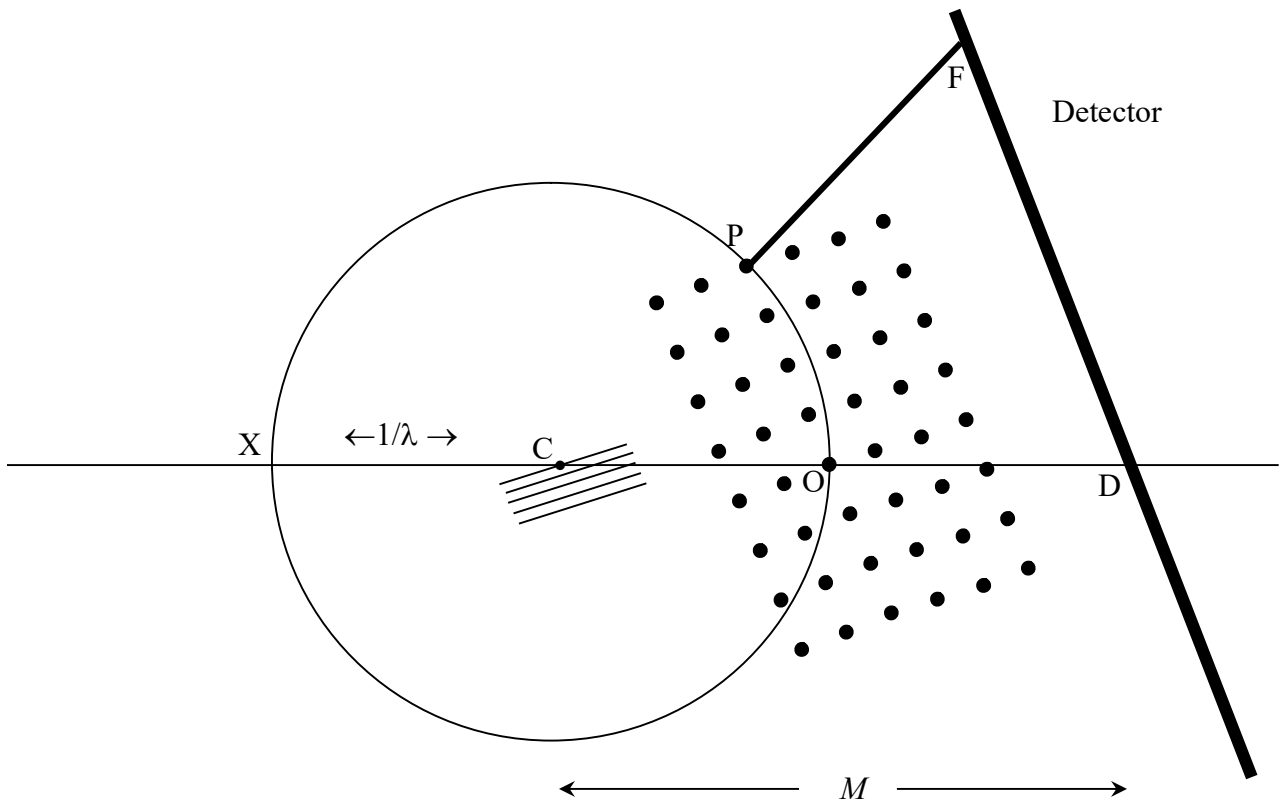
$$\sin \theta = \frac{OP}{OX}$$

$$= \frac{1/d_{hkl}}{2(1/\lambda)}$$

$$\lambda = 2d_{hkl} \sin \theta$$



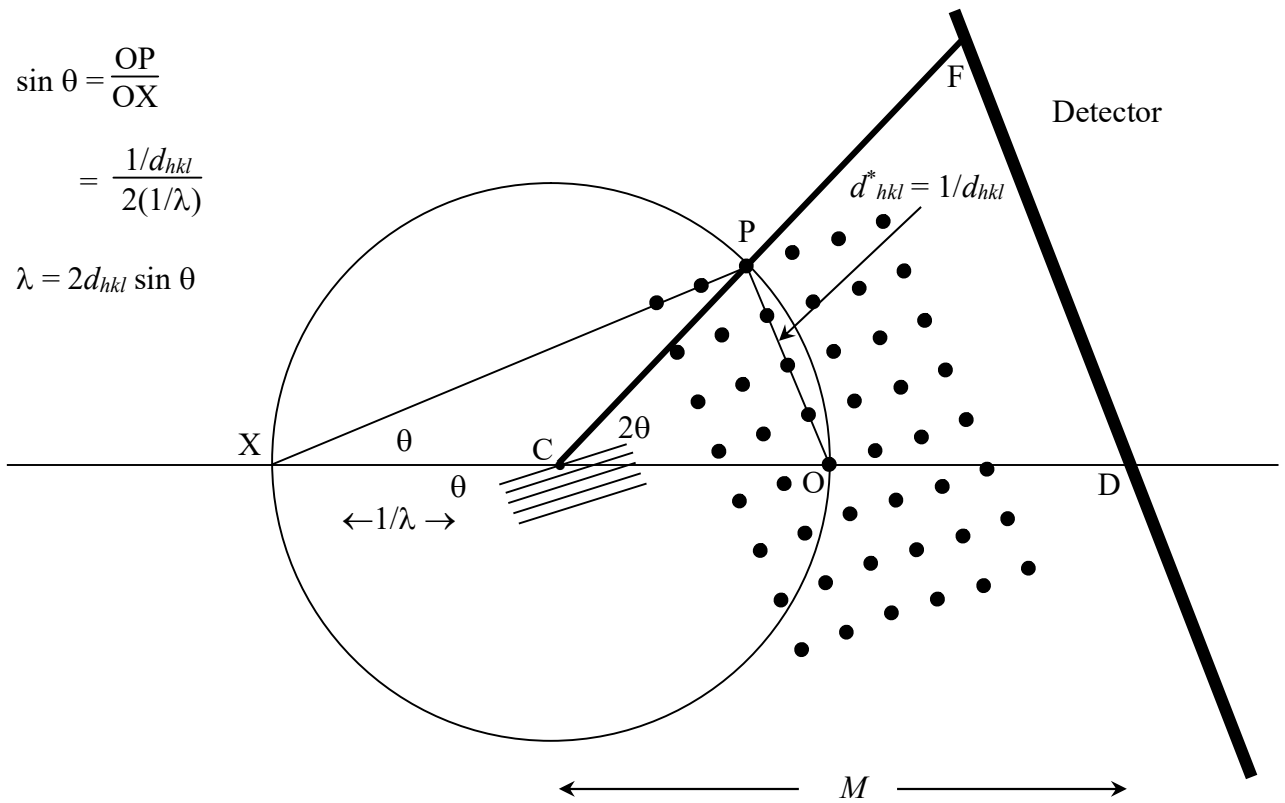
# Ewald Sphere



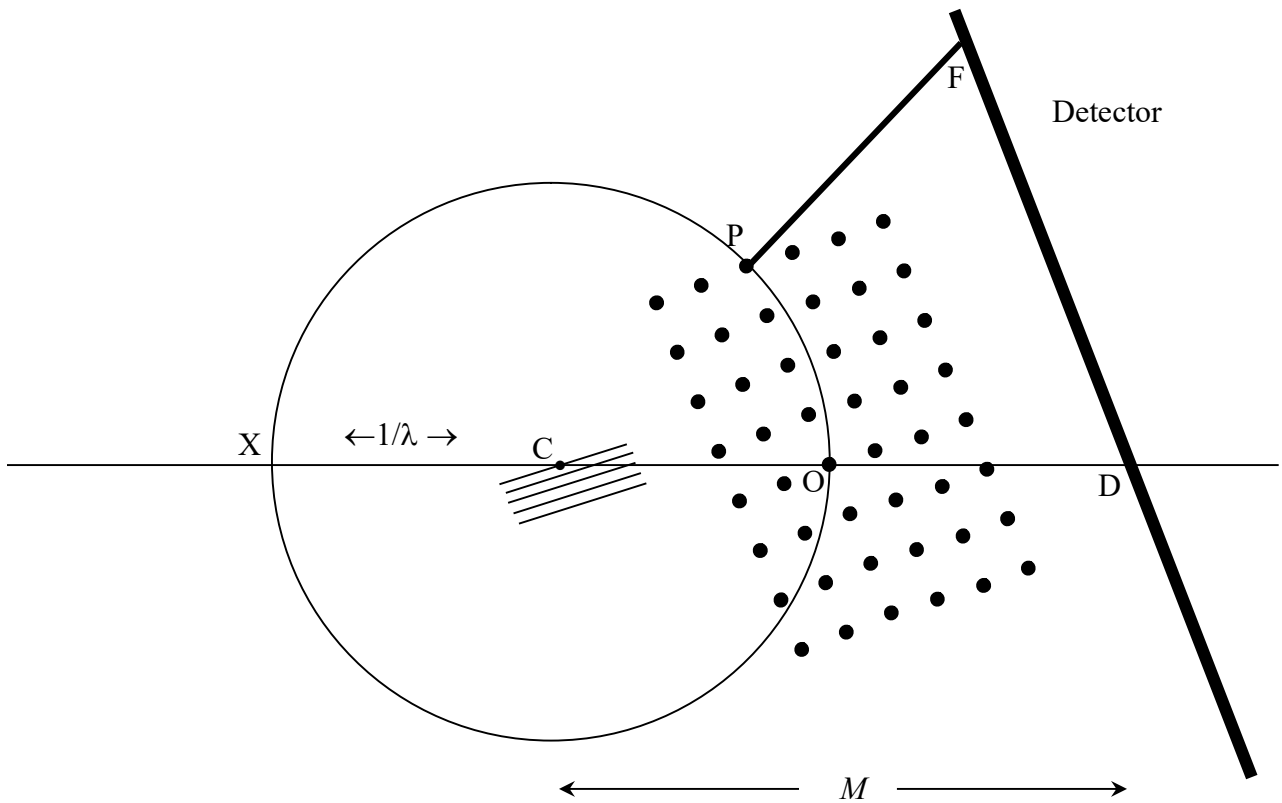
$$\sin \theta = \frac{OP}{OX}$$

$$= \frac{1/d_{hkl}}{2(1/\lambda)}$$

$$\lambda = 2d_{hkl} \sin \theta$$



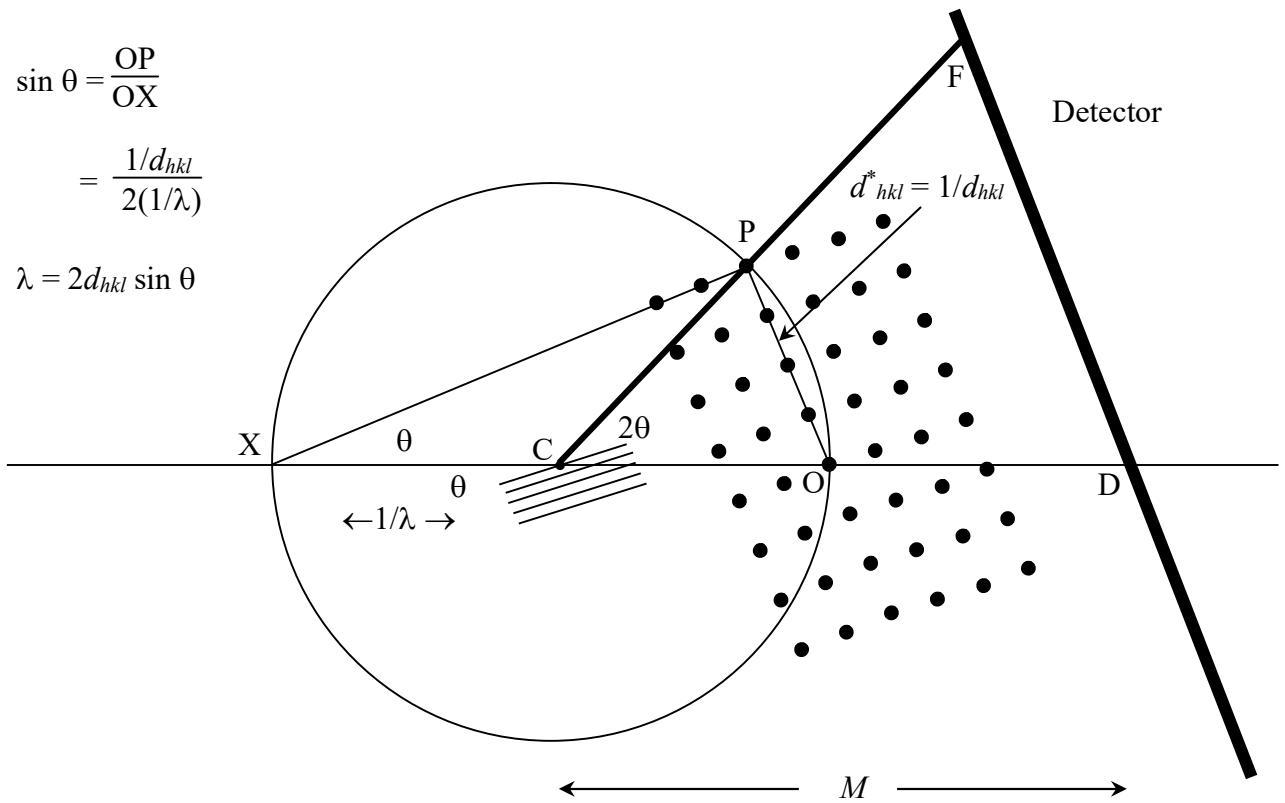
# Ewald Sphere



$$\sin \theta = \frac{OP}{OX}$$

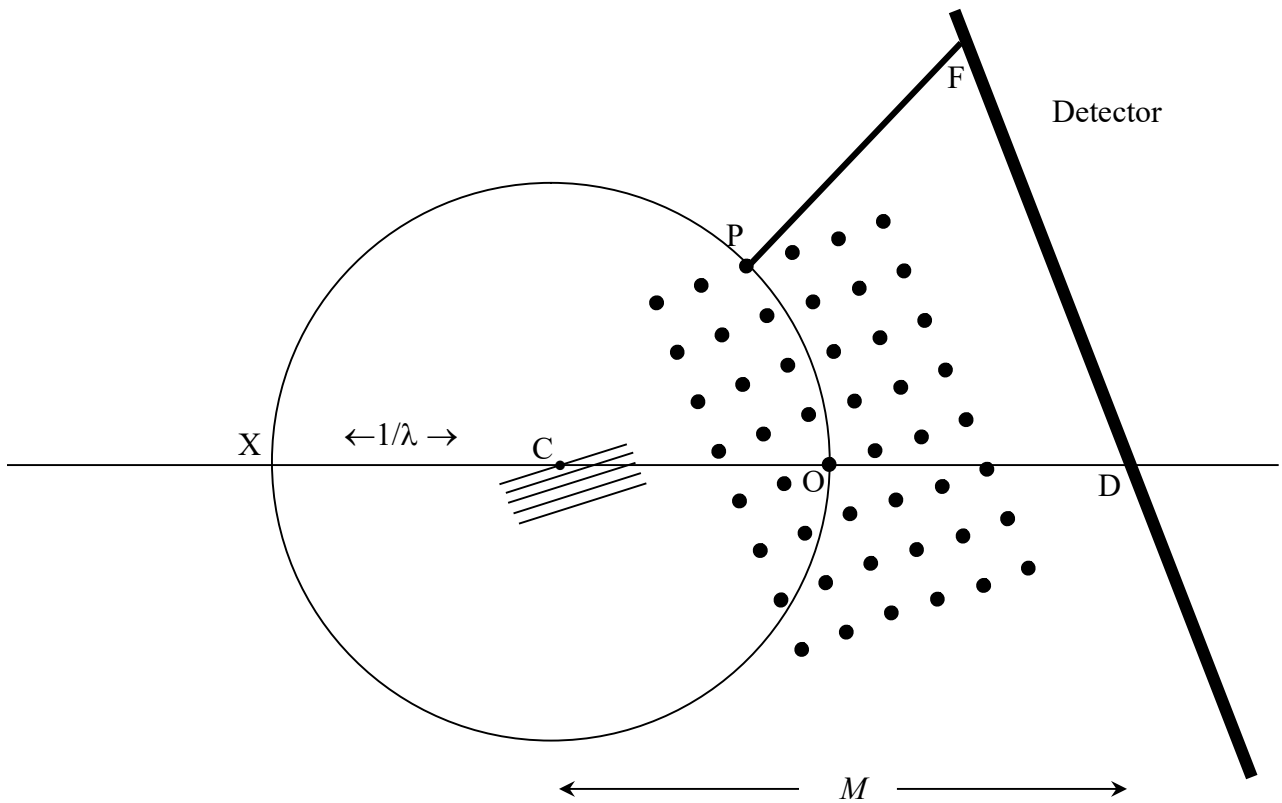
$$= \frac{1/d_{hkl}}{2(1/\lambda)}$$

$$\lambda = 2d_{hkl} \sin \theta$$





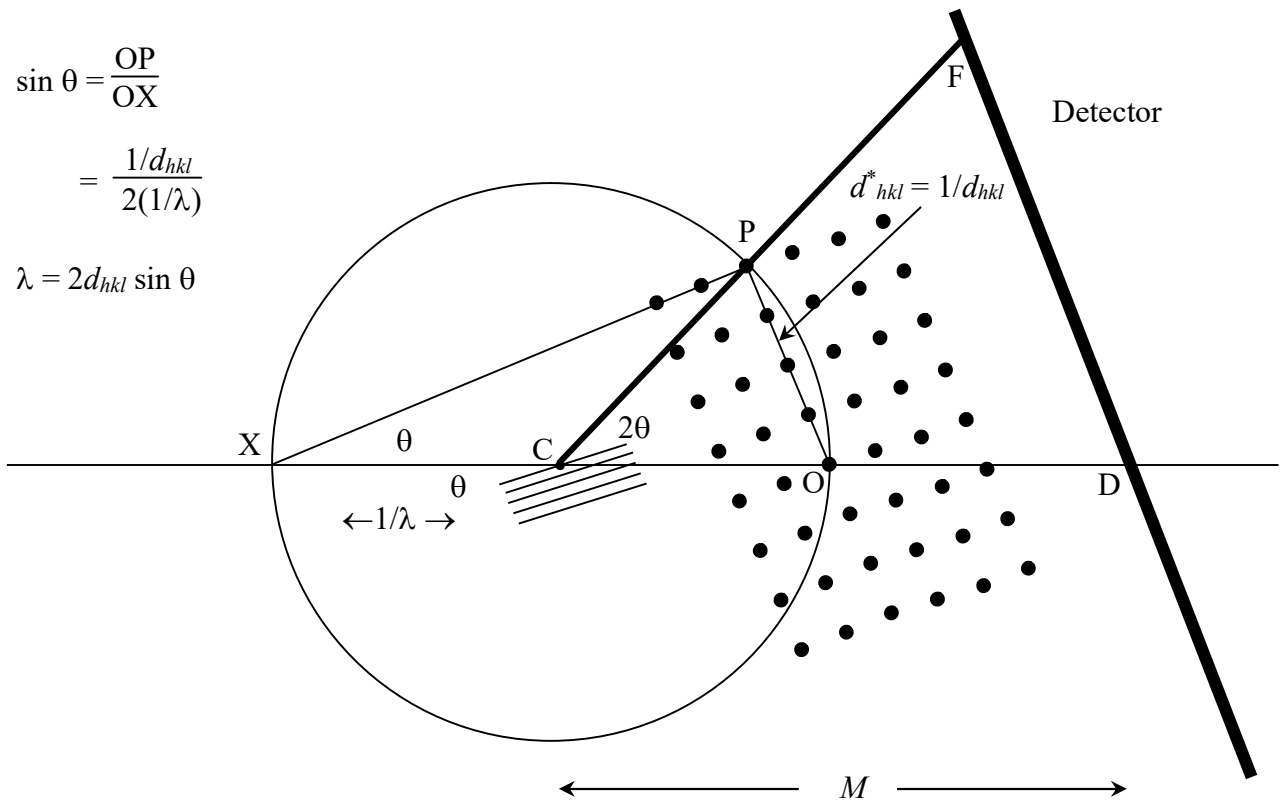
# Ewald Sphere



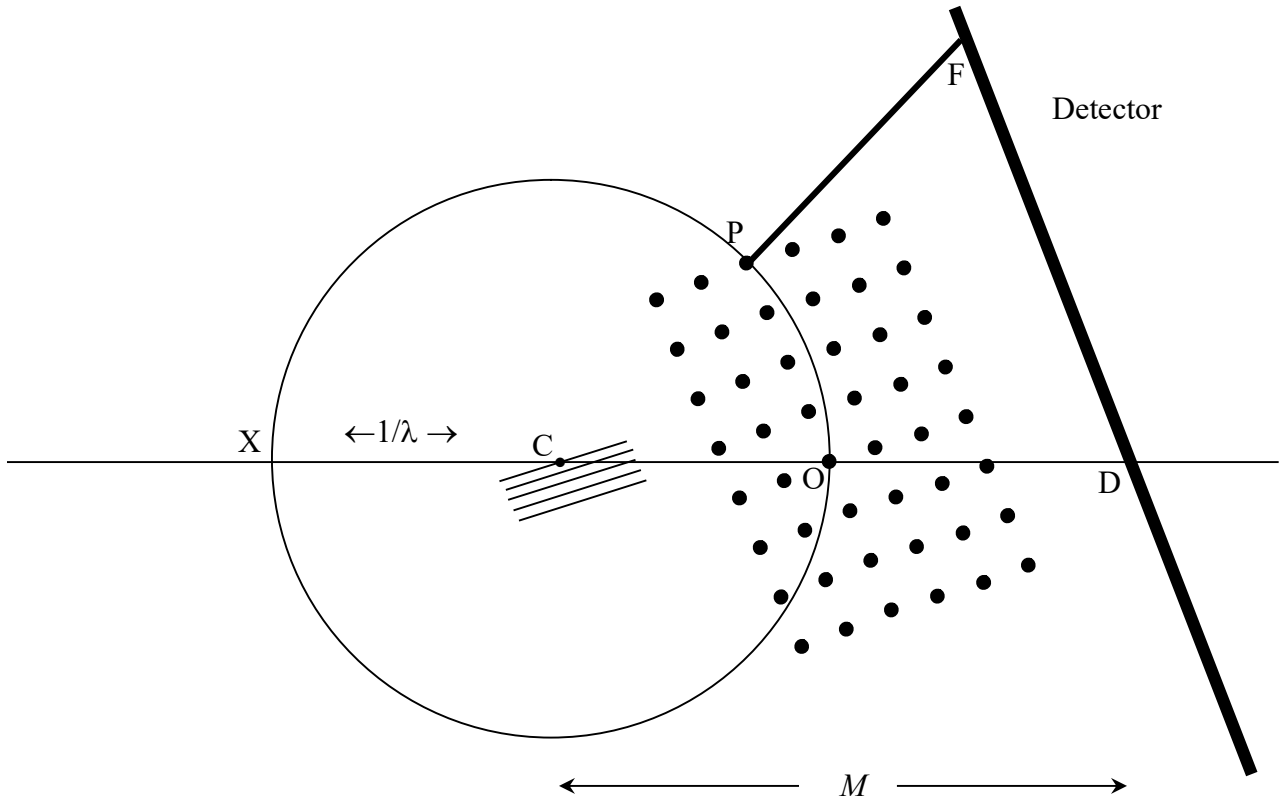
$$\sin \theta = \frac{OP}{OX}$$

$$= \frac{1/d_{hkl}}{2(1/\lambda)}$$

$$\lambda = 2d_{hkl} \sin \theta$$



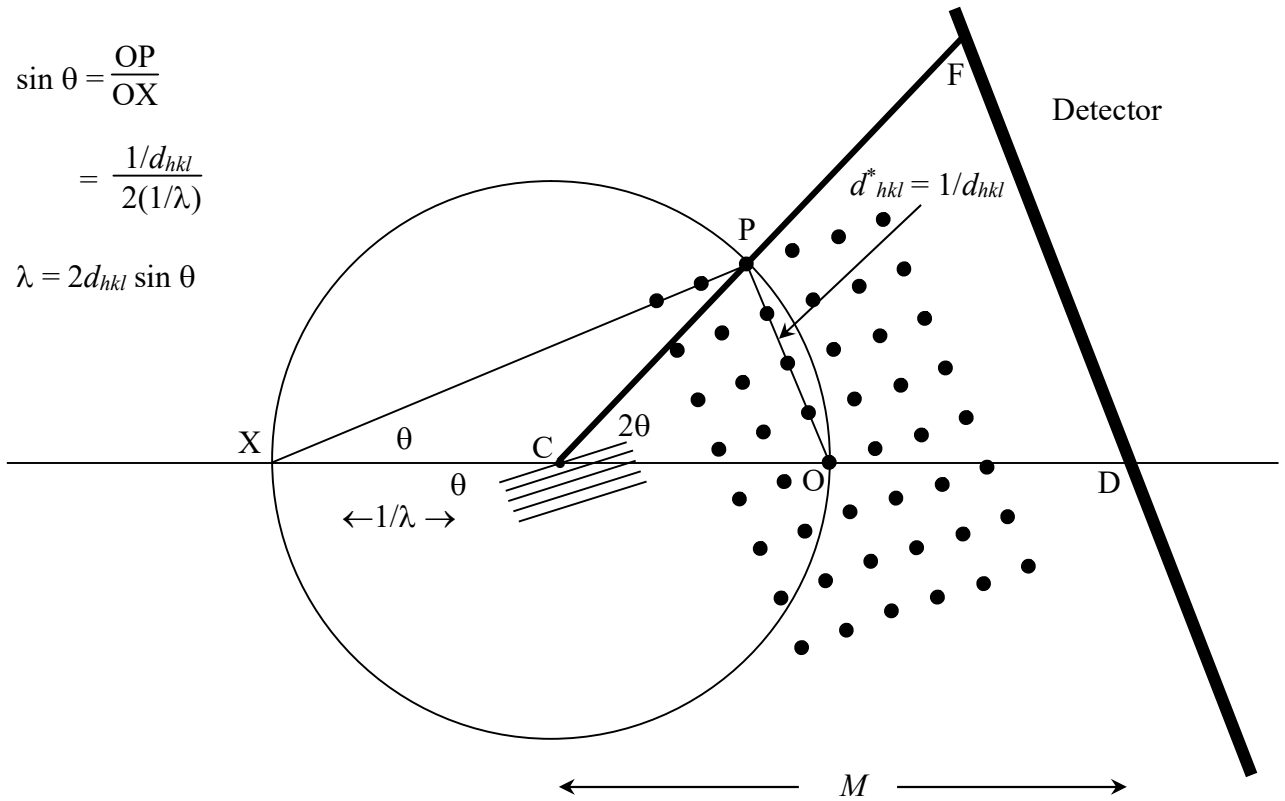
# Ewald Sphere



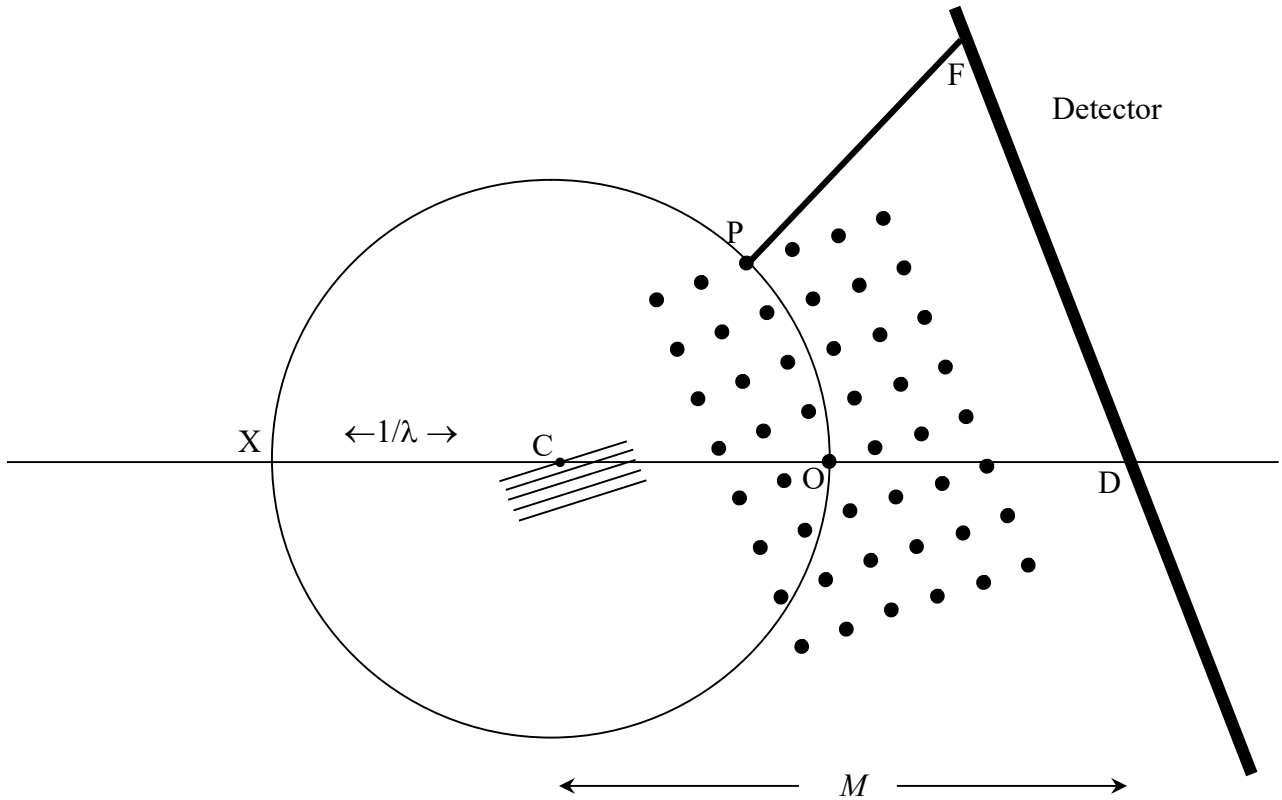
$$\sin \theta = \frac{OP}{OX}$$

$$= \frac{1/d_{hkl}}{2(1/\lambda)}$$

$$\lambda = 2d_{hkl} \sin \theta$$



# Ewald Sphere



$$\sin \theta = \frac{OP}{OX}$$

$$= \frac{1/d_{hkl}}{2(1/\lambda)}$$

$$\lambda = 2d_{hkl} \sin \theta$$

